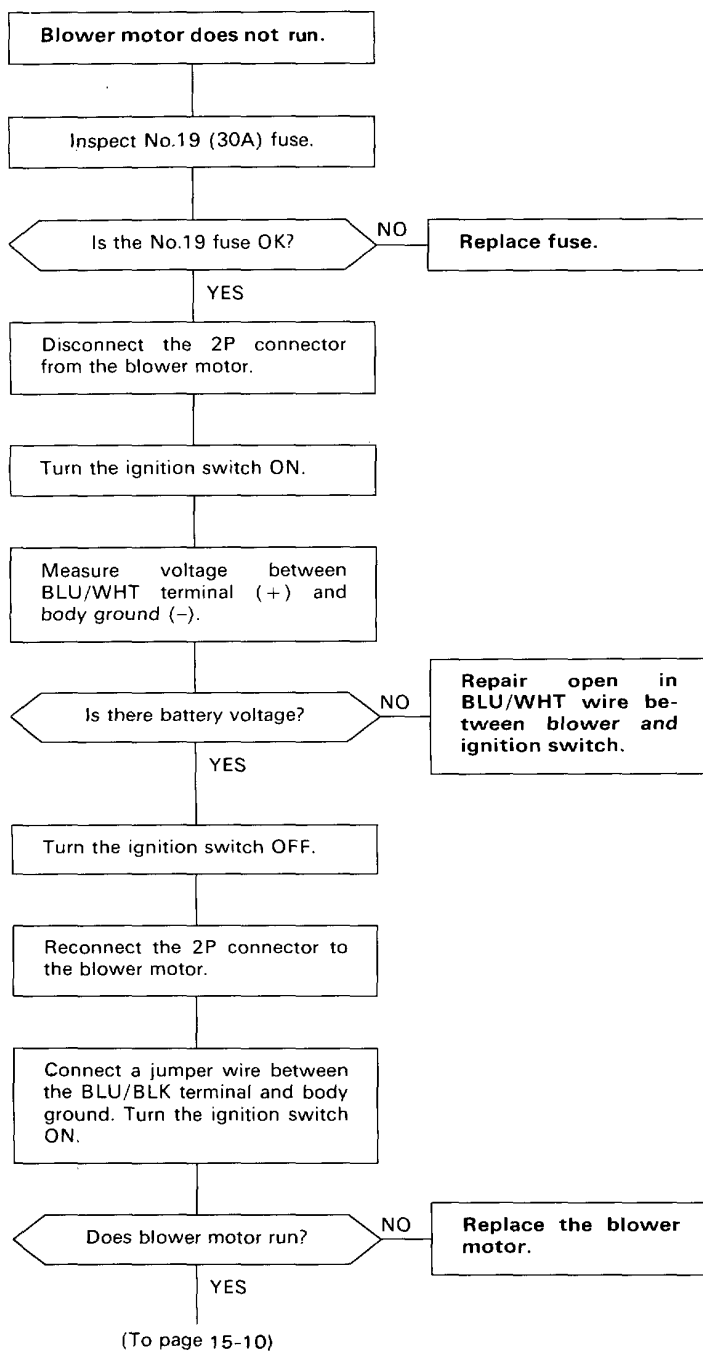




Flow Chart-Blower



BLU/WHT



View from wire side

BLU/BLK



View from wire side

(cont'd)

Troubleshooting

Flow Chart-Blower (cont'd)

(From page 15-9)

Turn the ignition switch OFF.

Remove the jumper wire.

Disconnect the 6P connector from the fan switch.

Connect the jumper wire between the BLU/BLK terminal and body ground.

Turn the ignition switch ON.

Does the blower motor run?

NO

Repair open in BLU/BLK wire between blower and fan switch.

YES

Turn the ignition switch OFF.

Remove the jumper wire.

Inspect the fan switch (page 15-23).

Is the fan switch OK?

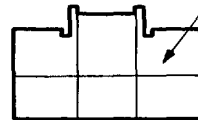
NO

Replace the fan switch.

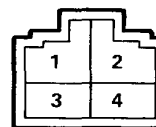
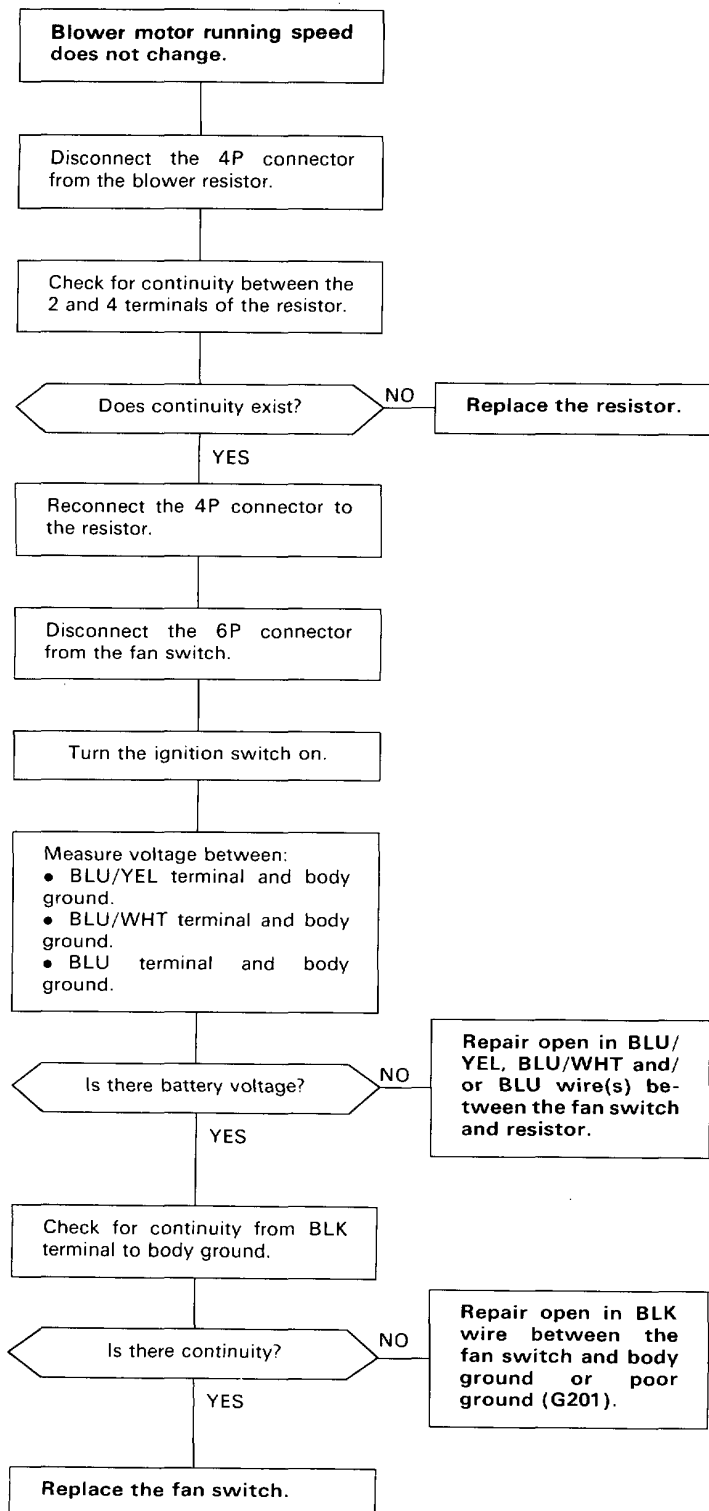
YES

Repair open in BLK wire between the fan switch and body ground or poor ground (G201).

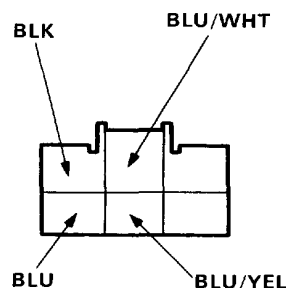
BLU/BLK



View from wire side



View from terminal side



View from wire side