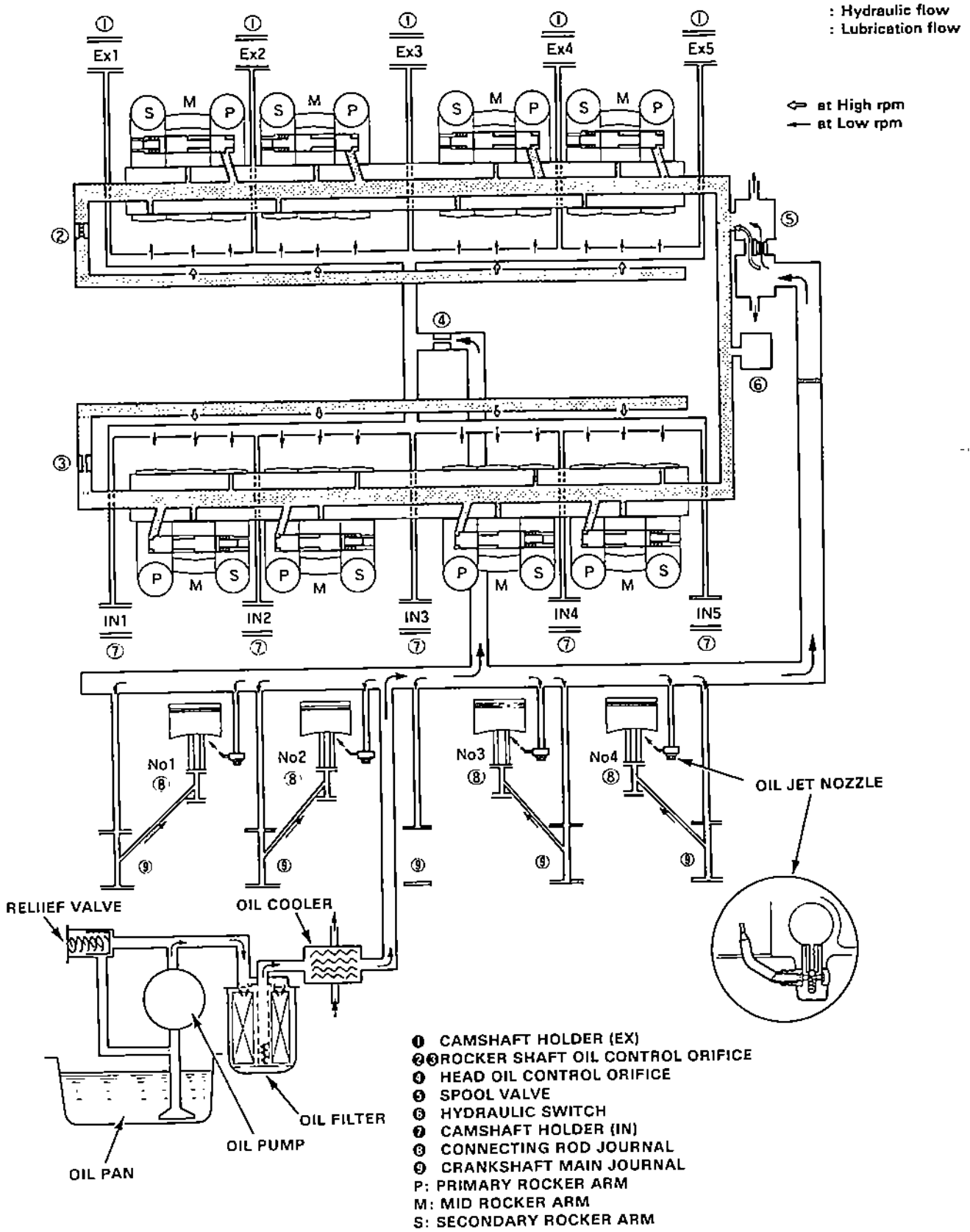




Lubrication System

Oil Flow



Lubrication System

Oil Passage

The lubrication system is a full filtration circulation type. The oil pump is directly linked to the crankshaft; oil collected in the oil pump is passed through the oil strainer, after which pressure is regulated by the pump relief valve. It is then filtered through the oil filter and pumped to the cylinder block and cylinder head. A baffle plate is provided inside the oil pan; the baffle plate helps minimize the chance that changes in oil level produced inside the pan while driving will effect the amount of oil. Jet nozzles on the cylinder block provide lubrication to the pistons and cylinder walls.

