

# Emission Control System

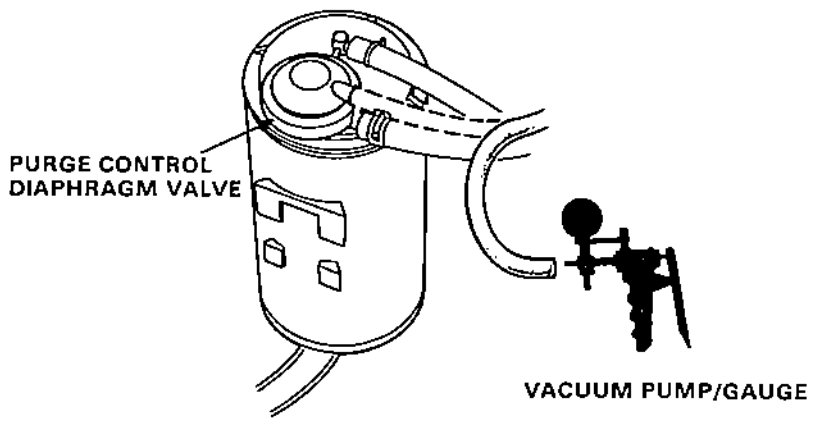
## Evaporative Emission Controls

### Troubleshooting Flowchart

Inspection of Evaporative Emission Controls

Disconnect #7 vacuum hose from the purge control diaphragm valve (on the charcoal canister) and connect a vacuum gauge to the hose.

Start the engine and allow to idle.  
NOTE: Engine coolant temperature must be below 80 °C (176°F).



Is there vacuum ?

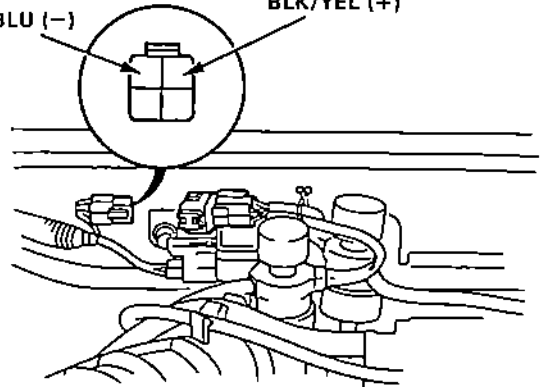
YES

Disconnect the 4P connector.

NO

BLU (-)

BLK/YEL (+)



Measure voltage between BLK/YEL (+) terminal and BLU (-) terminal.

Is there battery voltage ?

YES

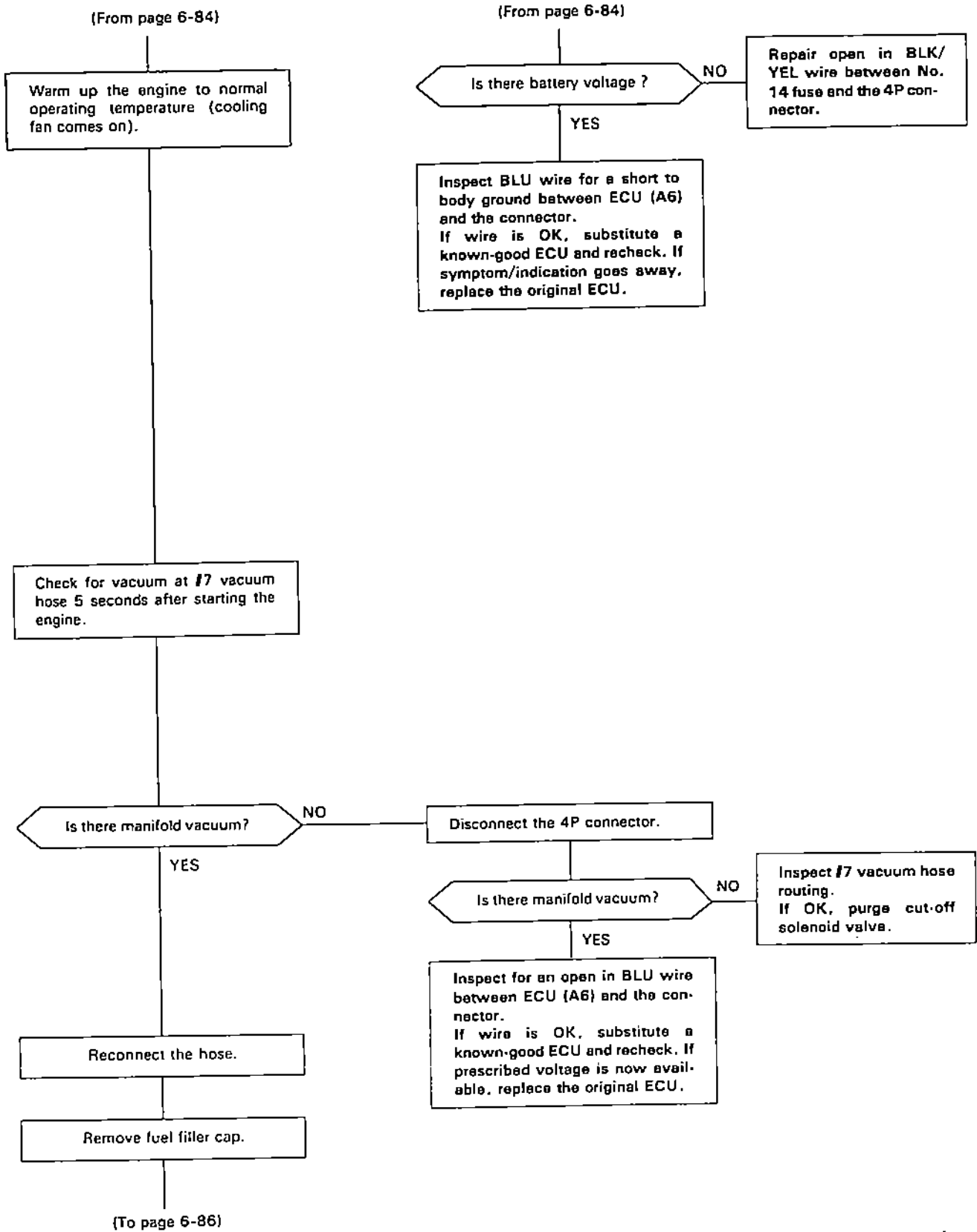
Inspect #7 vacuum hose routing.  
If OK, replace purge cut-off solenoid valve.

NO

Measure voltage between BLK/YEL (+) terminal and body ground.

(To page 6-85)

(To page 6-85)



(cont'd)

# Emission Control System

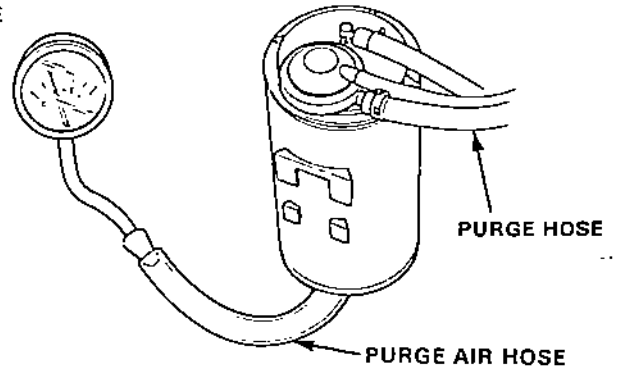
## Evaporative Emission Controls (cont'd)

(From page 6-85)

Connect a vacuum gauge to canister purge air hose.

Start the engine and raise speed to 3,500 min<sup>-1</sup> (rpm).

VACUUM/PRESSURE GAUGE, 0-4 in. Hg



Does vacuum appear on gauge within 1 minute?

YES

See two-way valve test to complete. Evaporative emission control are OK.

NO

Connect a vacuum gauge to the canister purge hose and raise the engine speed to 3,500 min<sup>-1</sup> (rpm).

Does vacuum appear on the gauge within 1 minute?

YES

Replace the canister.

NO

Inspect the purge hose. If hose is OK, replace the throttle body.