

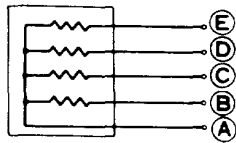
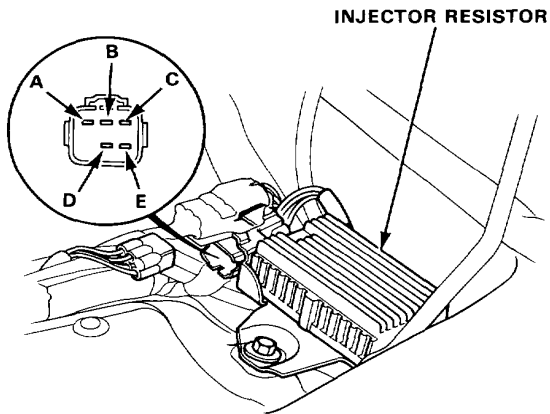
Fuel Supply System

Injector Resistor

Testing

1. Disconnect the resistor connector.
2. Check for resistance between each of the resistor terminals (E, D, C and B) and the Power terminal (A).

Resistance should be: 5–7 Ω



- Replace the resistor with a new one if any of the resistances are outside of the specification.

Pressure Regulator

Testing

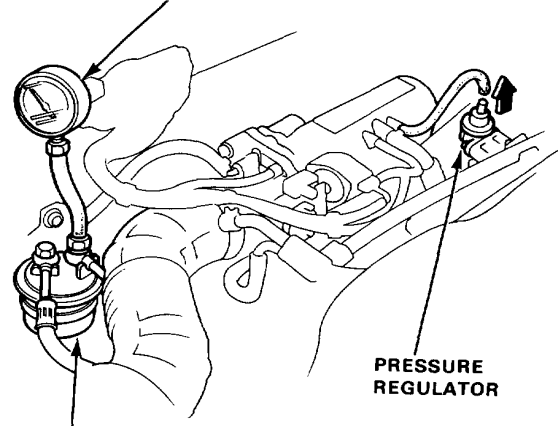
WARNING Do not smoke during the test. Keep open flames away from your work area.

1. Attach a pressure gauge to the service port of the fuel filter (page 6-71).

Pressure should be:

240–279 kPa (2.45–2.85 kg/cm², 35–41 psi)
(with the regulator vacuum hose disconnected)

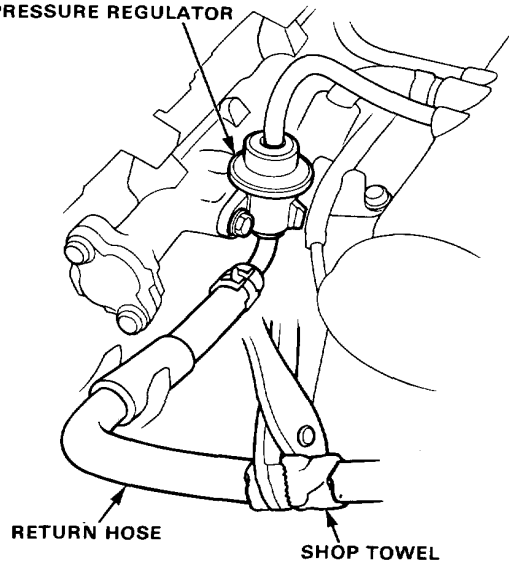
FUEL PRESSURE GAUGE
07406-0040001



2. Check that the fuel pressure rises when the vacuum hose from the regulator is disconnected.

- If the fuel pressure did not rise, check whether it rises when the return hose is lightly pinched.

PRESSURE REGULATOR



- If the pressure does not rise, replace the regulator and retest.