

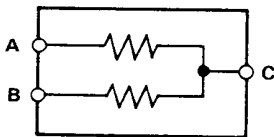
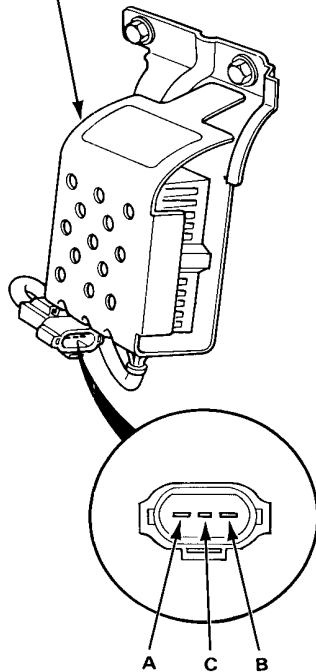
Lighting System

DIM-DIP Resistor Test

CAUTION: Dim-Dip resistor becomes very hot in use of Dim-Dip headlights; do not touch it or the attaching hardware immediately after they have been turned off.

1. Disconnect the 3-P connector from the resistor.
2. There should be continuity between A and C; between B and C terminals.

RESISTOR (Located left side, engine compartment)



Brake Lights (KQ model)

Circuit Diagram

- HIGH MOUNT BRAKE-LIGHT (KQ model only)
Replacement, page 16-11

