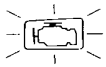
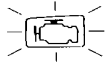




Troubleshooting Flowchart — EACV



Self-diagnosis LED indicates code 14: A problem in the Electronic Air Control Valve (EACV) circuit.



- Engine is running.
- Check Engine warning light is on.
- LED indicates CODE 14.

Turn the ignition switch OFF.

Remove HAZARD fuse in the main fuse box for 10 seconds to reset ECU.

Start engine.

Is Check Engine warning light on and does LED indicate CODE 14?

NO

Intermittent failure, system is OK at this time (test driving may be necessary).
 Check for poor connections or loose wires at EACV and at C313 (round connector located at left shock tower).

YES

Stop engine.

Disconnect the 2P connector from the EACV.

Measure resistance between the 2 terminals on the EACV.

Is there 8—15Ω ?

NO

Replace EACV.

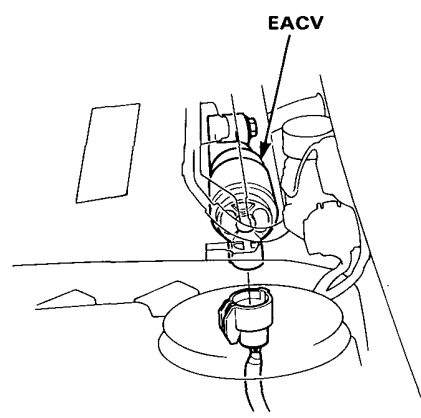
YES

Check for continuity to body ground on each terminal on the EACV.

Does continuity exist ?

YES

Replace EACV.



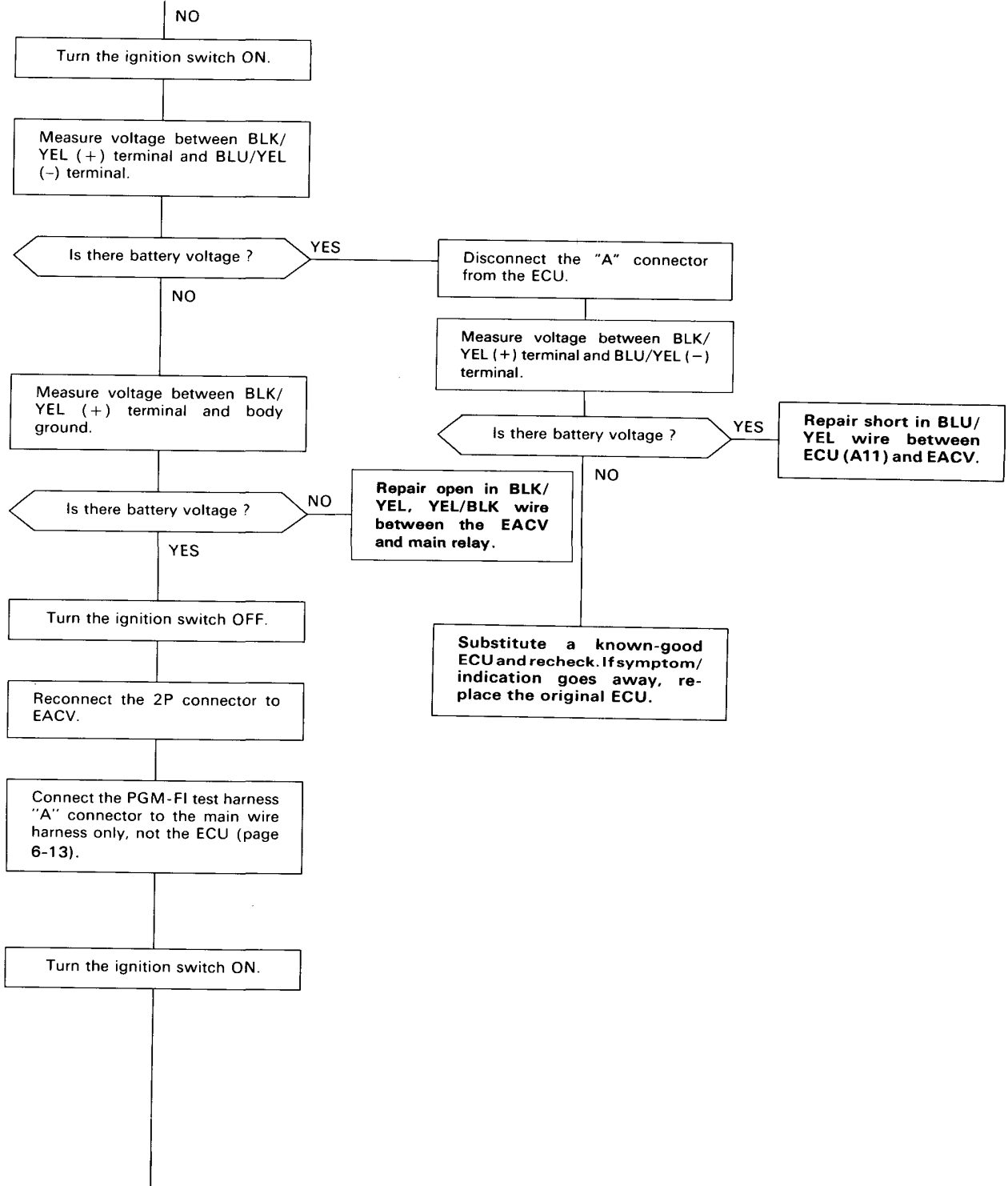
(To page 6-48)

(cont'd)

Idle Control System

Troubleshooting Flowchart — EACV (cont'd)

(From page 6-47)



(To page 6-49)



(From page 6-48)

