

PGM-FI Control System



Troubleshooting Flowchart — ECU

Check Engine warning light isn't on for two seconds after ignition is first turned on.

Is oil pressure warning light on?

Turn the ignition switch OFF.

Connect the PGM-FI test harness between the ECU and connector (page 6-13).

Connect B6 terminal to body ground.

Turn the ignition switch ON.

Is Check Engine warning light on?

Measure voltage between body ground and the following terminals individually to: ●A2, ●A4, ●A16, ●A18

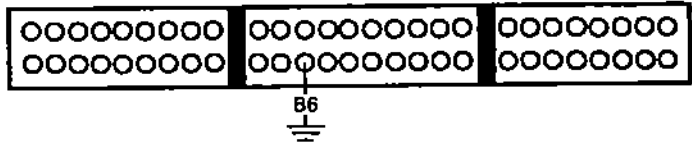
Is there less than 1V?

Substitute a known-good ECU and recheck. If symptom/ indication goes away, replace the original ECU.

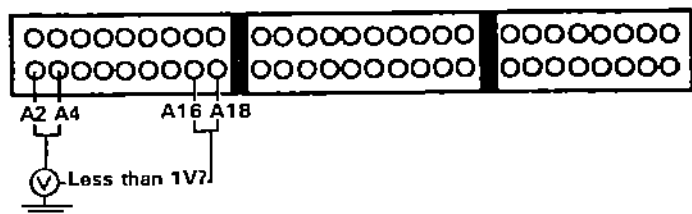
Inspect No.1 fuse.

Is No.1 fuse OK?

Repair open in YEL wire between No.1 fuse and combination meter.



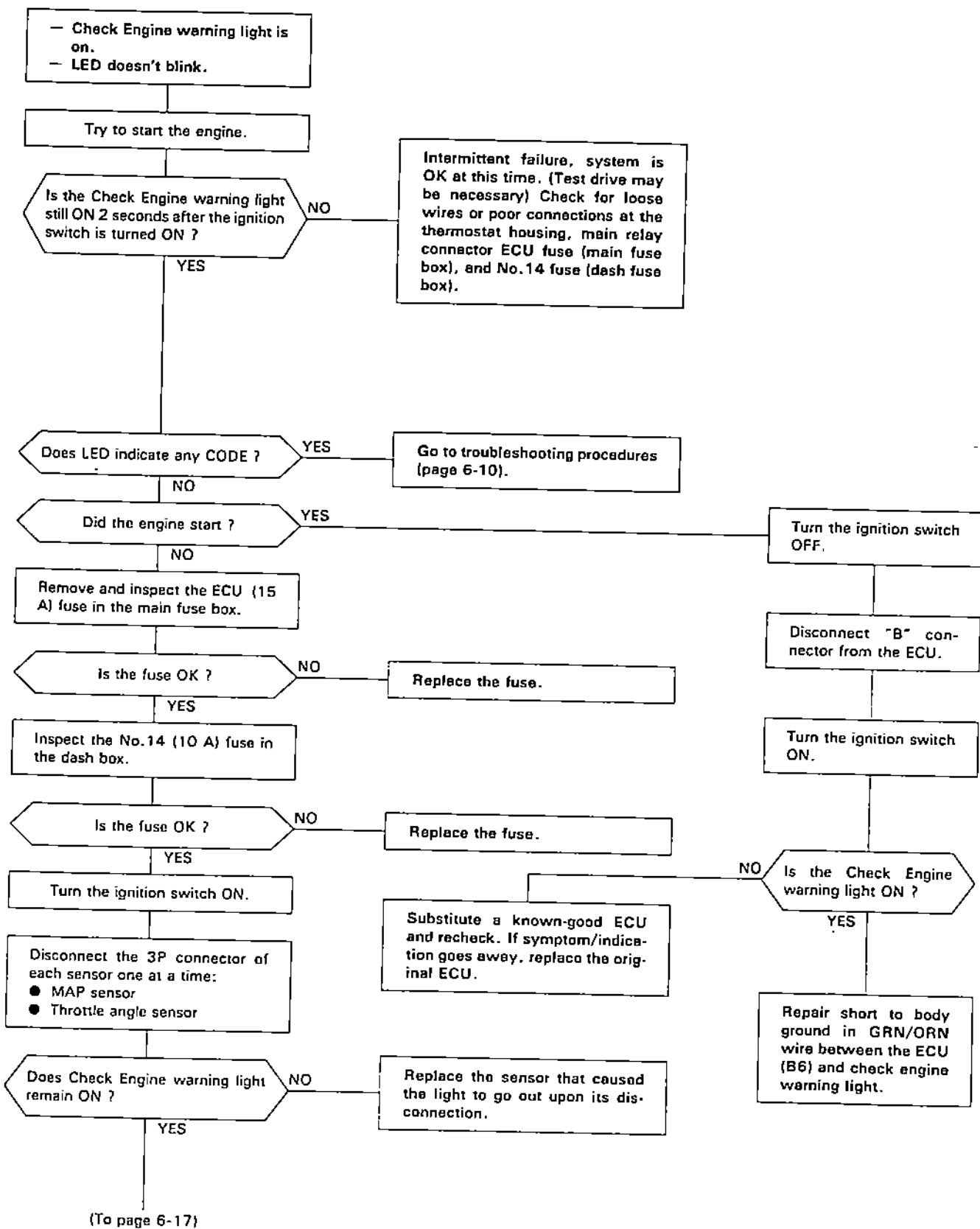
- Replace warning light bulb.
- Repair open in GRN/ORN wire between ECU (B6) and combination meter.



- Repair open in wire between ECU and thermostat housing (G101) that had more than 1V.

PGM-FI Control System

Troubleshooting Flowchart — ECU (cont'd)





(From page 6-16)

Turn the ignition switch OFF.

Connect the PGM-FI test harness (page 6-13). But disconnect the "C" connector from the ECU only, not the main wire harness.

Check for continuity between body ground and the following terminals: C13, C15.

Does continuity exist ?

YES

NO

Reconnect the all connectors. Reconnect the "C" connector to the ECU.

Turn the ignition switch ON.

Individually connect the following terminal to Body Ground, A16 · A18

Is the Check Engine warning light still ON after 2 seconds ?

NO

YES

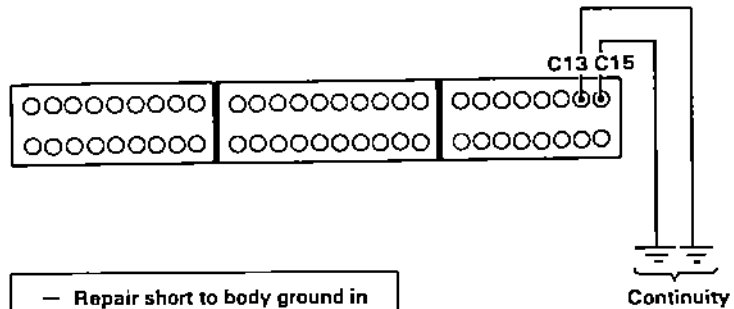
Measure voltage between A18 (-) and the following: A13 (+) and A15 (+).

Is there battery voltage ?

NO

YES

Substitute a known-good ECU and recheck. If symptom/indication goes away, replace the original ECU.



- Repair short to body ground in YEL/WHT wire between ECU (C13) and throttle angle sensor.
- Repair short to body ground in YEL/RED wire between ECU (C15) and MAP sensor.

- Repair open in BLK/RED wire between ECU (A18) and G101.
- Repair open in BRN/BLK wire between ECU (A16) and G101.

- Repair open in YEL/BLK wire between ECU (A13, A15) and main relay.
- Check main relay and wiring connectors at main relay.